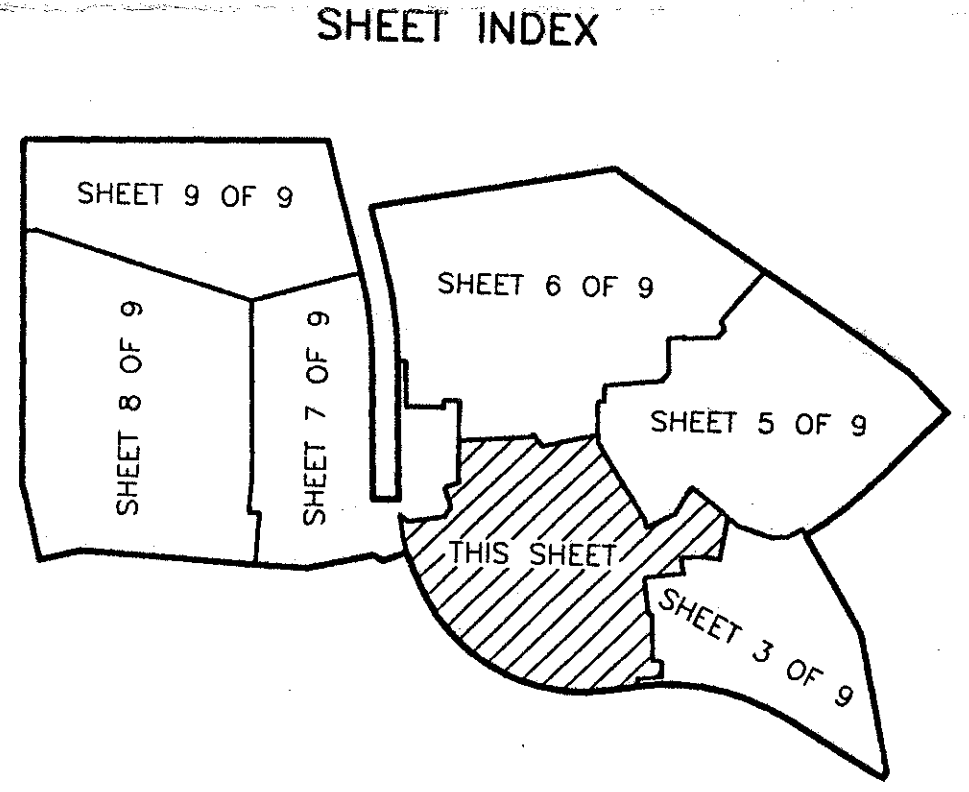
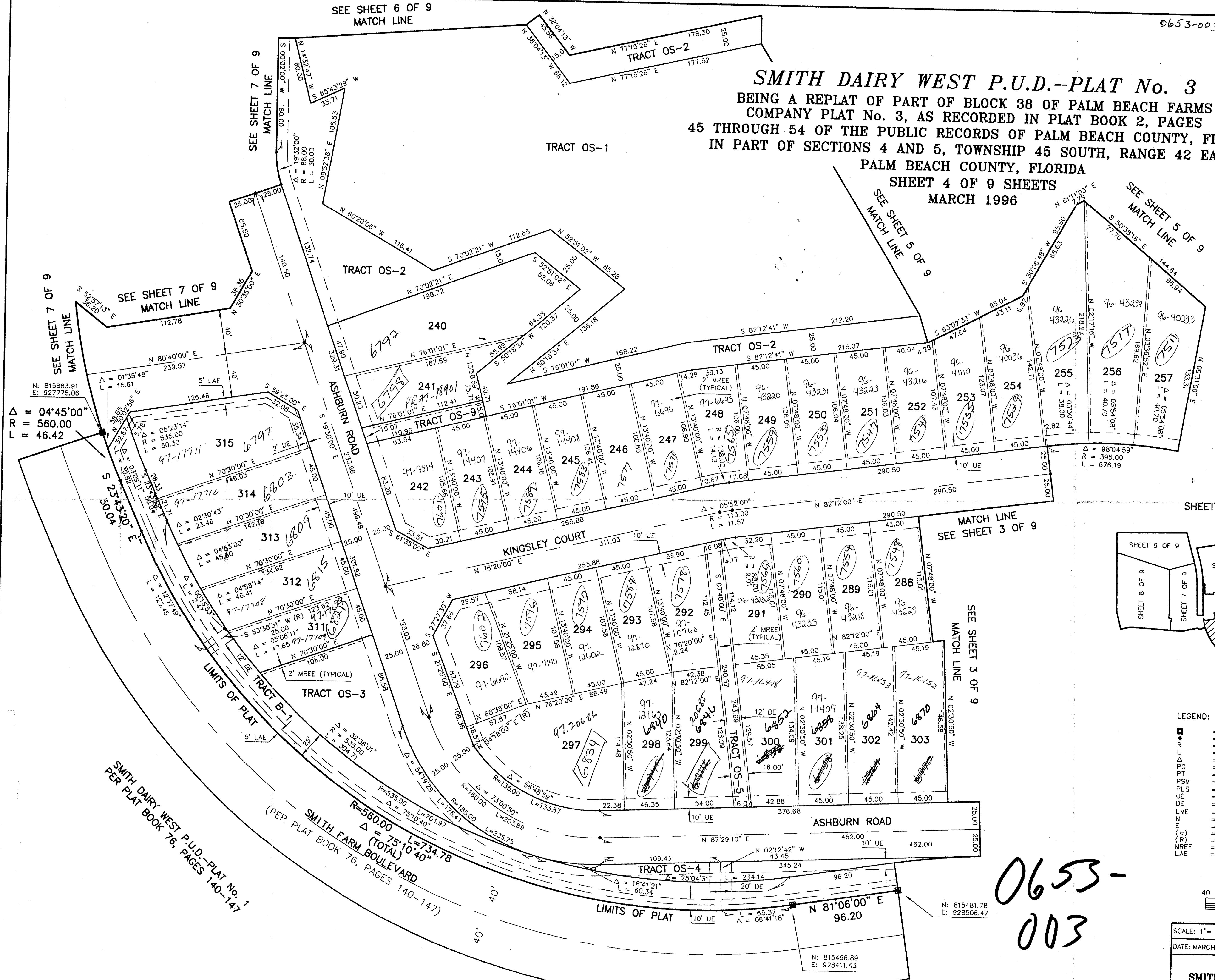


SMITH DAIRY WEST P.U.D.-PLAT No. 3
 BEING A REPLAT OF PART OF BLOCK 38 OF PALM BEACH FARMS
 COMPANY PLAT No. 3, AS RECORDED IN PLAT BOOK 2, PAGES
 45 THROUGH 54 OF THE PUBLIC RECORDS OF PALM BEACH COUNTY, FLORIDA
 IN PART OF SECTIONS 4 AND 5, TOWNSHIP 45 SOUTH, RANGE 42 EAST,
 PALM BEACH COUNTY, FLORIDA

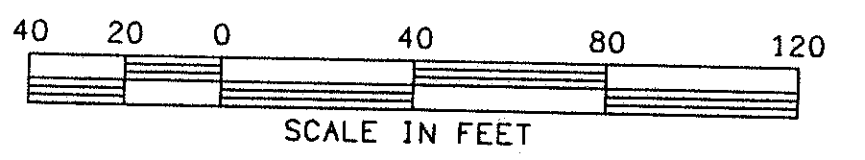
SHEET 4 OF 9 SHEETS
 MARCH 1996

*Pet. 94-77
 AUC. # 0001
 5/2/21Z*

*Pet. 94-77
 Smith Dairy West PUD
 Pods B & C
 Pod D (TRACT A THIS PLAT)
 TO BE RE-PLATED*



- LEGEND:
- = PERMANENT REFERENCE MONUMENT "P.L.S. 4828"
 - = PERMANENT CONTROL POINT "P.C.P. 4828"
 - R = RADIUS
 - L = ARC LENGTH
 - Δ = DELTA (CENTRAL ANGLE)
 - PC = POINT OF CURVATURE
 - PT = POINT OF TANGENCY
 - PLS = PROFESSIONAL SURVEYOR & MAPPER
 - PLS = PROFESSIONAL LAND SURVEYOR
 - UE = UTILITY EASEMENT
 - DE = DRAINAGE EASEMENT
 - LME = LAKE MAINTENANCE EASEMENT
 - N = NORTHING (GRID)
 - E = EASTING (GRID)
 - (C) = CALCULATED
 - (R) = RADIAL
 - MREE = MAINTENANCE AND ROOF EAVE EASEMENT
 - LAE = LIMITED ACCESS EASEMENT



SCALE: 1" = 40'
 DATE: MARCH 1996
 NICK MILLER, INC.
 Surveying
 Planning & Development
 Consultants
 DRAWN BY:
 CHK:

SMITH DAIRY WEST P.U.D.-PLAT No. 3

2560 RCA Blvd. • Suite 105
 Palm Beach Gardens, Florida 33410
 DRAWING NUMBER

SUBDIVISION: SMITH DAIRY WEST
 BOOK: 77
 FLOOD ZONE: B
 QUAD: 49
 SE: 94-77
 PUD NAME: SMITH DAIRY WEST

SMITH DAIRY WEST P.U.D.-PLAT No. 1
 PER PLAT BOOK 76, PAGES 140-147

SMITH FARM BOULEVARD
 (PER PLAT BOOK 76, PAGES 140-147)
 R=560.00 L=734.78
 Δ = 75°10'40"

0653-003

*Recorded
 10-7-94*